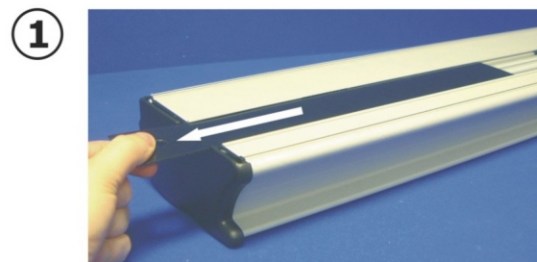
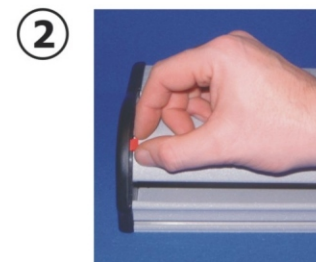




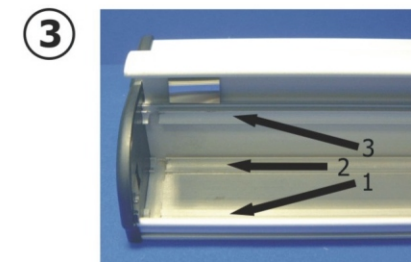
Kit includes : base with cartridge, bungee pole set and carry bag



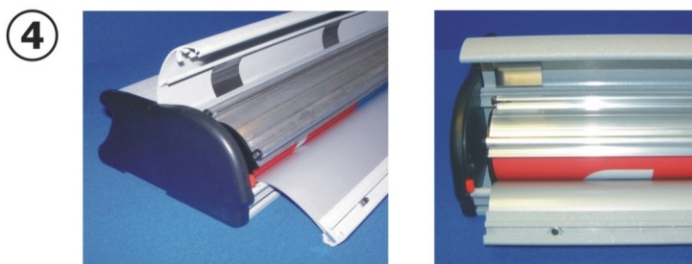
1 Slide open both pole retainers and remove the bungee pole set from the base



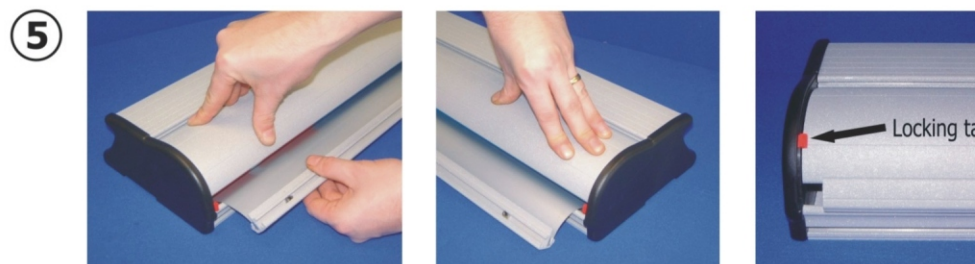
2 To open, **slide down both** locking tabs on the left and right sides of the base



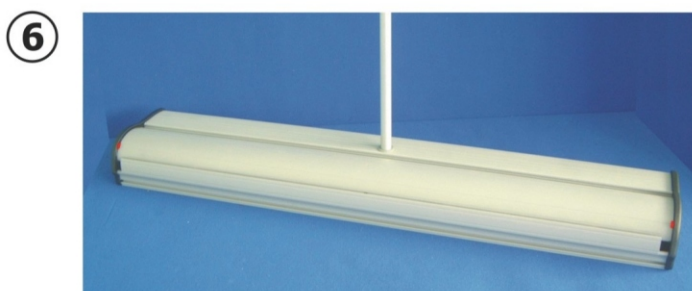
3 Lift open the lid and note the 3 grooves inside the base



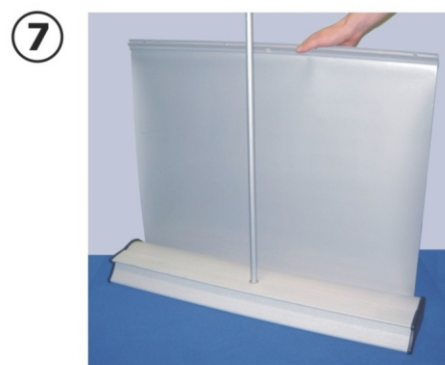
4 Place the banner cartridge into the base, ensure the cartridge rod is seated correctly into groove 1. Rotate the cartridge until the remaining rods are seated into grooves 2 and 3



5 To close, **press down firmly** onto both left and right sides of the lid until an audible click is heard. To lock, **slide up both** locking tabs into the position shown above



6 Assemble the bungee pole and insert into the base



7 Lean the bannerstand backwards and extend the banner by lifting the top rail until the complete image is visible



8 Finally secure the banner into position by locating the top rail hole with the bungee pole

Technical Specification

Visible graphic area : Between 2180mm & 2190mm approx (H) x 600mm to 1000mm (W) depending upon the version supplied
 Note : Add 200mm to the graphic length to allow for the roller
 Unit weight inc. carry bag : 4.5kg approx (800mm version)

Guidelines for Graphic substrates

- 1, Material thickness must be between 225 and 300 microns in total
- 2, The substrate must be pliable and suitable for roller bannerstands
- 3, After fitting, the graphic should be left for 24 hours before use to ensure the adhesive bonds sufficiently

Notes

- 1, For loading graphics into the cartridge refer to separate instruction sheet UI095
- 2, Take care when lowering the banner (do not drop) to prevent damage to the graphic