

*Aero is a smart and extremely versatile modular display system that is very easy to transport and assemble, making it ideal for all types of display application.*



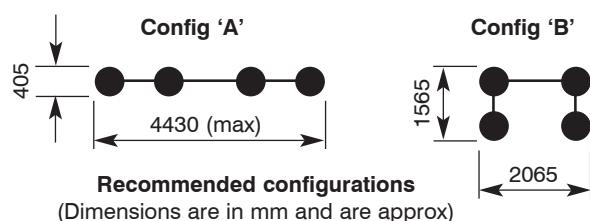
Banners can be positioned in multiple angles



The display can be expanded by linking kits together

## features & benefits

- 3 single sided pull-down roller banners mounted onto telescopic support posts and bases (2 banners 1000mm wide, 1 banner 1500mm wide)
  - Choice of 3 fixed visible graphic heights: 1010mm, 1510mm and 2010mm
  - Lightweight anodised aluminium components
  - Supplied complete with two mounting points for spot or floodlighting\*
  - Banners can be positioned to create a flat back-wall or can be angled to fit a variety of display spaces
  - Aero's modular design makes it easy to expand the display by linking additional kits together
  - Suitable for indoor use only
  - Supplied with carry bags
- \*Suitable for PS750 or PS1000 lighting



### hardware specifications

Assembled dimensions (mm):  
 Configuration 'A'  
 2120 h (max) x 4430 w x 405 d approx  
 Configuration 'B'  
 2120 h (max) x 2065 w x 1565 d approx  
 Weight:  
 22kg approx (including carry bags)

### graphic specifications

Visible graphic dimensions (mm):  
 1010 h x 990 w approx (short)  
 1510 h x 990 w approx (medium)  
 2010 h x 990 w approx (tall)  
 1010 h x 1490 w approx (short)  
 1510 h x 1490 w approx (medium)  
 2010 h x 1490 w approx (tall)  
 Note:  
 Add 200mm to **top** of graphic to allow for the roller mechanism  
 Add 110mm to **base** of graphic to allow for a folded hem, finished size 55mm  
 Recommended graphic substrate:  
 225 to 300 micron thick PVC banner vinyl

### additional info

Included in kit:  
 2 x 1000mm roller banners  
 1 x 1500mm roller banner  
 4 x telescopic posts  
 4 x circular bases  
 12 x cassette / rail hangers  
 6 x Carry bags  
 Availability:  
 Anodised aluminium posts and roller banners inc dark grey mouldings and powdercoated grey steel bases  
 Recommended accessories:  
 PS1000 or PS750 lighting  
 Roller banners:  
**Require tensioning before use (see over)**

# Assembly Instructions

## Assembly instructions



2 x 1000mm roller banners, 1 x 1500mm roller banner, 4 x telescopic posts, 4 x circular bases, 12 x cassette / rail hangers, 6 x Carry bags and 3 x allen keys



1 Unscrew wing nut located on the base of each telescopic post.



2 Attach the telescopic post to the circular base using the wing nut. Repeat step for remaining posts.



3 Slide cassette / rail hangers into the telescopic posts. Position to suit your display shape and size.

NB If displaying graphics at 90° angles, an additional cassette / rail hanger should be fitted to the base of the telescopic pole **before** the circular base is attached.



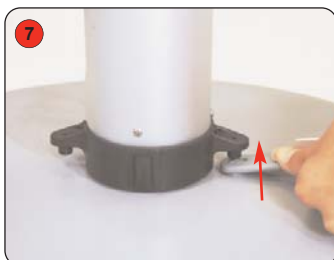
4 Extend telescopic poles to the desired height, push in the release button extend pole until button comes through the pole side.



5 Hang the roller banner on to the telescopic post. Attach the hook on the end of the banner to the cassette / rail hanger on the telescopic pole. Repeat step for other end of roller banner.



6 Pull down each roller banner.



7 Attach the bottom rail to the rail rail hanger located at the bottom of the telescopic pole. Repeat step for other end of rail.



8 Slide optional lights onto the fitting attached to top of telescopic pole. **NB Lights can be only be fitted to two telescopic poles in the kit.**

## Graphic attachment instructions



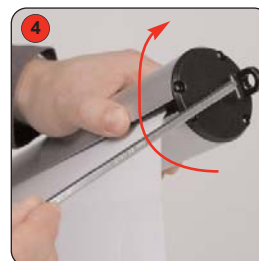
1 Slide the bottom rail into the folded hem of the banner graphic.



2 Remove the backing paper from the adhesive strip on the roller banner leader.



3 Attach the graphic to the adhesive strip. Remove the locking pin from the end of the roller banner.



4 Tension the roller banner using the allen key supplied. Place the allen key into the endplate and turn clockwise to tension. Recommended number of turns: 24